



St Petersburg
University



SPBU EXCHANGE DAYS 2021

We are glad to see you! We will start soon

Please, rename yourself the following way:
Surname_Name_University

14-15.04.2021

11:00 – 14:00 Moscow time



EXCHANGE DAYS 2021 PROGRAMME

Date: 14.04.2021, 11:00 – 14:00 (Moscow time)

Introduction of the SPbU Exchange Programmes

11:00 - 11:10 Introduction of the Exchange Days 2021

11:10 – 11:20 Welcome Word by SPbU Vice-Rector for International Affairs

11:20 – 11:40 SPbU Facts and Figures

11:40 – 12:10 Exchange programmes at SPbU: Information for Incoming Students (Application and selection, Visa Issues, Arrival, Dormitory)

12:10 – 12:30 Short break

12:30 – 12:50 Erasmus Student Network (ESN) SPbU

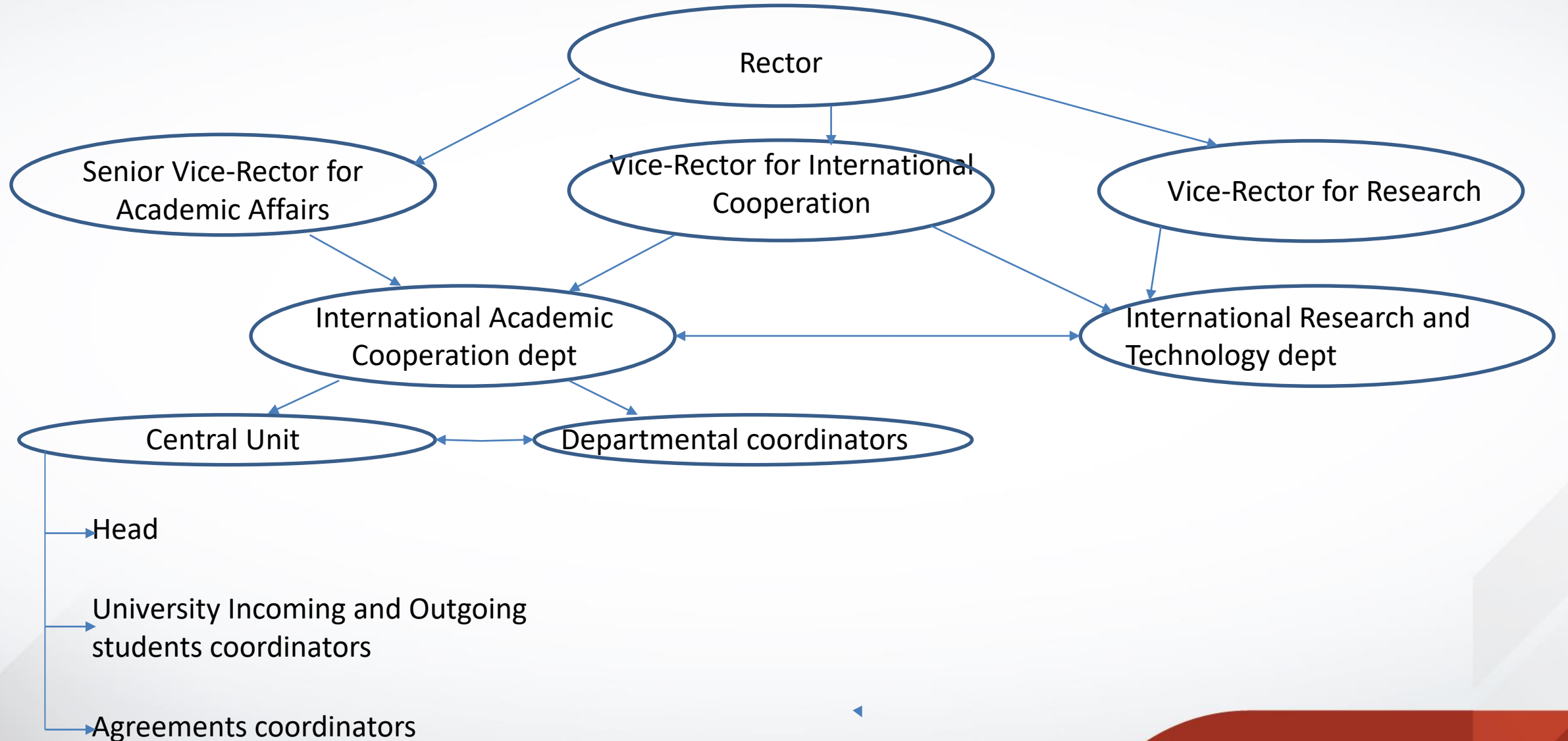
12:50 – 13:10 Survival Guide to Saint Petersburg by ESN SPbU: Prices, Transport, Must-See Places, Travels

13:10 – 13:30 Q&A

13:30 Introductory Videos about SPbU and Saint Petersburg



INTERNATIONAL ACADEMIC COOPERATION STRUCTURE





St Petersburg
University



FACTS AND FIGURES

Veronika Koytova
Head of the International Academic
Cooperation department

THE FIRST RUSSIAN UNIVERSITY

St Petersburg University is the first Russian University. It was founded by Emperor Peter the Great in 1724.





ST PETERSBURG UNIVERSITY ALUMNI AND ACADEMIC STAFF HAVE BECOME

9

Nobel Prize
winners

6

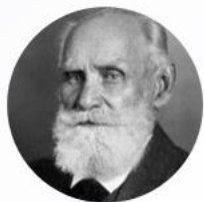
Russian
prime
ministers

2

Russian
presidents



NOBEL PRIZE WINNERS



Ivan **Pavlov**



Ilya **Mechnikov**



Nikolay **Semyonov**



Lev **Landau**



Aleksandr **Prokhorov**



Wassily **Leontief**



Leonid **Kantorovich**



Iosif **Brodsky**



Christopher Antoniou
Pissarides



SPBU IN WORLD RANKINGS



Master in Management



European Business Schools



Top 2% universities in the world



In 2010 SPbU was granted a privilege to set its own educational standards

SPbU Awards its own academic degrees:
Candidate of Sciences and Doctor of Sciences



SPbU OFFERS 427 EDUCATIONAL PROGRAMMES

9 general education programmes

119 bachelor degree programmes and specialist degree programmes

52 aspirantura programmes in the areas of specialisation

5 middle level professional education programmes

214 Master degree programmes

28 clinical residency programmes

In 2016 a **Councils for Degree Programmes** was established at SPbU. It is an advisory bodies composed of leading Russian and international academics and representatives of employers and professional communities. The Council formulates the most efficient strategy for the development of educational programmes.



St Petersburg
University



EDUCATION

SPBU ONLINE COURSES



Санкт-Петербургский
государственный
университет

<http://online.spbu.ru>

Открытое
образование

<https://openedu.ru>

coursera

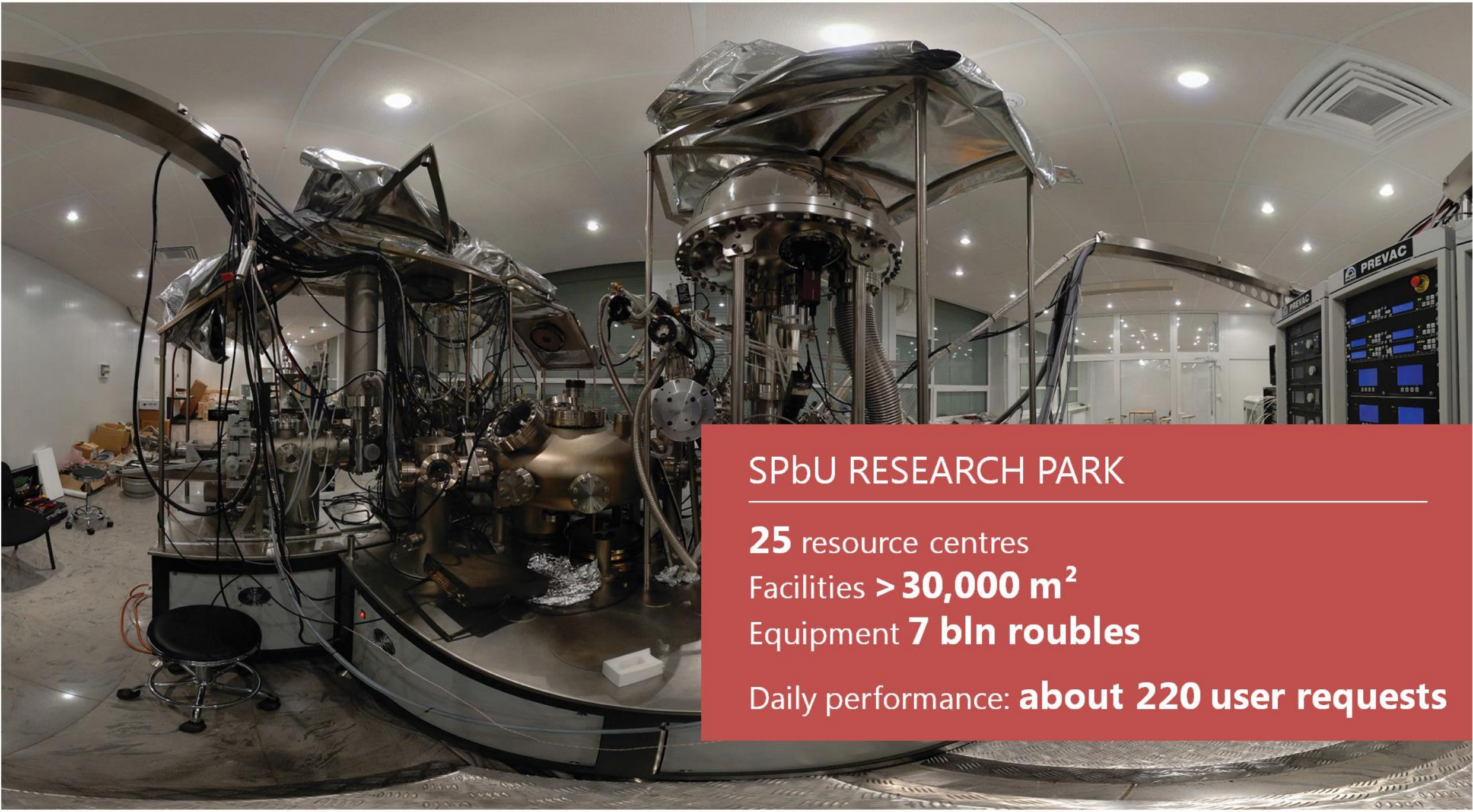
<https://coursera.org>



RESEARCH PRIORITY AREAS:



- nanotechnology and materials science
- biomedicine and human health
- information systems and technology
- ecology and sustainable use of natural resources
- social research and technologies
- human resource management and technologies



SPbU RESEARCH PARK

25 resource centres

Facilities **> 30,000 m²**

Equipment **7 bln roubles**

Daily performance: **about 220 user requests**



M. GORKY SCIENTIFIC LIBRARY

One of the oldest and largest university libraries in Russia

The Library today:

- **over 7 mln** depository items in stock
- **40,000** Oriental, Old Slavonic and Western European manuscripts
- **70,000** rare books
- **3 mln** records in the electronic catalogue



LANGUAGE TESTING CENTRE

TESTING:

state certification testing
in Russian as a foreign language

examination in Russian
as a foreign language, history of Russia
and fundamentals of Russian laws

Cambridge English
Language Assessment

JLPT — International Japanese Language Proficiency Test

YAEL — The Hebrew Proficiency Test

TOPIK — Test of Proficiency in Korean

Persian Language Test

ECL — foreign language exam operated
by the European consortium for the Certificate
of Attainment in Modern Languages

Turkish Proficiency Exam —
an international Turkish language exam

UNIVERSITY WITHOUT BORDERS

- **Over 500** partner universities from **65** countries
- **14** double diploma master programmes





SOCIAL PROJECTS



- Environmental initiative
- Volunteering
- Donor centre



350 EVENTS PER YEAR

- conferences
- student scientific societies
- round tables
- open and guest lectures
- international discussions with government leaders
- UN Models





SPBU ALUMNI ASSOCIATION IS A PUBLIC NON-PROFIT ORGANIZATION OFFERING A PLATFORM FOR A CONSTANT DIALOGUE AMONG UNIVERSITY STUDENTS AND GRADUATES.

The members of the Alumni Association have adopted the following priority areas of work:

- Forming and developing the alumni network, where the expertise and energy of university graduates is united in order to solve issues relevant for the University, city and country
- Supporting SPbU: promoting the University brand on the global arena, developing partner relations with employers and advancing the value of University brand in the CVs of SPbU students and graduates
- Supporting scientific and educational initiatives of the University, its students and graduates.



Full-degree admissions

SPbU has a special right to hold an open competition for places funded by the Russian Government (scholarship).

abiturient.spbu.ru

admission@spbu.ru

Contractual basis

Tuition fees apply

State Funded Scholarship

- 100% grant on tuition fees + monthly allowance
- reduced price for student halls (4 euros/month)

Thank you for your attention!

Contacts

english.spbu.ru

ifea.spbu.ru

v.koytova@spbu.ru



St Petersburg
University



EXCHANGE AND FREEMOVER PROGRAMMES AT SPBU

Ekaterina Petrianina
Incoming Mobility Coordinator



Studying at SPbU

~ 25000 students

11% international students

Programmes in Russian, English, German, Chinese

- Full-time programmes
- Exchange programmes
- Online courses
- Additional short and long-term programmes
- Language courses



Student Exchange Programme

- For students from SPbU partner universities
- 1 semester or full academic year
- No tuition fees
- Free Russian language course
- Possibility to take any courses within the chosen field of studies (individual study plan)
- Academic and administrative support
- Orientation activities
- Simple application procedure <http://ifea.spbu.ru/en/sep>



Freemover Student Programme

- For students from non-partner universities or without nomination from partner universities
- 1 semester or full academic year
- Tuition fees **1 870 – 3 570 EUR** per semester depending on the field of studies
- Same conditions and application process as for SEP

<http://ifea.spbu.ru/en/sep>



APPLICATION AND ACADEMIC CALENDAR

Deadline for application and nomination	Recommended arrival dates	Orientation activities	First day of classes	Last day of classes	Exams
May 1	August 25-27	August 27-September 10	September 1	December 30	January 1-31
October 10	February 1-3	February 3-15	February 11	May 31	June 1-30

Application online on <https://ifea.spbu.ru/en/sep.html>

Average workload per semester - 30 ECTS



Programmes in **English** are available for exchange students within the following fields of studies:

- Applied Mathematics and Control Processes (IT)
- Economics
- Earth Sciences
- Law
- International Relations
- Mathematics and Mechanics
- Mathematics and Computer Science
- Management
- Philosophy (programme in Russian Studies)
- Political Science
- Sociology



Programmes in **Russian** are also available within the following fields of studies:

- Arts
- Asian and African Studies
- Biology
- Chemistry
- History
- Journalism (programme in **Chinese** available)
- Medicine and Dentistry
- Philology and Linguistics (including **full-time Russian language course**, programme in **German**)
- Physics
- Psychology

A winter scene with snow-covered branches and red berries. The top half of the image shows a close-up of dark, snow-laden branches with clusters of bright red berries. The bottom half shows a wider view of a snowy landscape with a path leading through trees and bushes, all covered in a thick layer of white snow.

Opportunities to study Russian

- ✓ Full-time Russian language course 20 academic hours per week (30 ECTS per semester)
- ✓ Russian language course 8 academic hours per week (8 ECTS per semester) + other courses
- ✓ Additional Russian language courses on fee-paying basis + Russian language Summer School

<http://russian4foreigners.spbu.ru/>

260 million Russian speakers in the world: **top-10** most spoken languages



VISA SUPPORT

- Visa application in study application form
- Within 2 months after the application deadline the student receives the visa invitation from your coordinator at SPbU
- The students goes to the Consulate/Visa Centre with the invitation to apply for the visa (please, check the necessary documents on the Consulate/Visa Centre website beforehand)
- The student receives a single-entry visa for 90 days first, the visa can be prolonged after arrival to SPbU and it becomes multi-entry
- The student needs to come to your departmental coordinator the next day after arrival to proceed with the migration registration
- The student needs to inform your departmental coordinator about your travels throughout the whole period of your studies in order to comply with the migration regulations



Extracurricular activities for exchange and freemover students

Together with **ESN SPbU**

*Make new friends and experience
Russian culture!*

- Buddy programme and pick-up service
- Orientation activities
- Language clubs and Tandem Programme
- Trips and tours
- Social activities and parties



Student Union



Concerts, theatre and parties



Start-up competition

Student life: Activities



Creative Student Associations



Volunteering



Green Campus



International EU & UN Models

Student life: Sport

30 sports
venues

21 kinds of
sports





St Petersburg — the cultural capital of Russia

**Best Tourist
Destination in
Europe**



**Convenient
location**

- Helsinki: 4 hrs
- Tallinn: 6 hrs
- Riga: 10 hrs

Cultural heritage

- 182 museums
- 82 theatres
- 8464 heritage sights
- ~200 festivals per year



TRANSPORT

- Transport Card: ~ **12 eu**/month for underground and buses
- 50% discount for local suburban trains with student ID

CULTURE

- Free entrance for students to most museums
- Discounts in theatres and cinemas with student ID

STUDENT LUNCH

2 – 4 euro

STUDENT HOUSING

- rented room in a flat: ~**250 eu**/month
- student dorms: ~ **70 eu**/month for place in a shared room



- ❖ For students studying in Saint Petersburg – Dormitory №19 at Kapitanskaya street 3
- ❖ 20 minutes walk from Primorskaya subway station
- ❖ Many supermarkets, bakeries, cafes and bars around (within 2-5 minutes walk)
- ❖ Across from a bank office (Sberbank)
- ❖ 3 minutes from the Finnish gulf
- ❖ Shared rooms for 2-3 people
- ❖ Flats with 1-3 rooms (2-3 people each), kitchen and bathroom

<https://campus.spbu.ru/295-fotografii-obshchegitii>

- ❖ For students studying in Peterhof (Mathematics and Mechanics; Applied Mathematics and Control Processes; Physics; Chemistry) and Strelna (Management bachelor programmes) – Dormitories in Peterhof Campus
- ❖ 10-20 minutes walk to the Peterhof faculty buildings
- ❖ Direct transport to GSOM Campus in Strelna
- ❖ Supermarkets, bank offices, cafes around
- ❖ Most beautiful suburban parks close

~5000 RUR per month

~60-70 euro per month



WELCOME TO SPbU!

International Academic Cooperation department

Exchange and freemover programmes

www.ifea.spbu.ru

mobility@spbu.ru

Ekaterina Petrianina

Incoming Mobility Coordinator

e.petryanina@spbu.ru



St Petersburg
University



SHORT BREAK

We will be back at 12:30

Please, rename yourself the following way:
Surname_Name_University

14-15.04.2021

11:00 – 13:30 Moscow time



ESN SPbSU

ESN SPbSU

ESN SPbSU is a local section of ESN. It was founded by student volunteers in 2018.



Our mascot – Pyshka →





Our team

Now there are **27** members of the Board and the Board Support

ESN SPbSU
LOCAL BOARD 2020/2021

 **ESN**
Erasmus Student Network
SPbSU


PRESIDENT
Darya Skachkova


VICE-PRESIDENT
Ilya Aslanov


EVENTS
Polina Sukhareva


SECRETARY
Maria Rogachevskaia


BUDDY PROGRAMME
Dmitry Kasatkin

ESN SPbSU
LOCAL BOARD 2020/2021

 **ESN**
Erasmus Student Network
SPbSU


COMMUNICATION
Juliana Skirdova


MOV'IN EUROPE
Esmina Akinzhanova


LANGUAGE PROGRAMME
Katerina Khodeeva


SOCIAL ERASMUS
Alexandra Tselikova

Our programs

- Buddy program
- Events
- Social program
- Speaking clubs
- Tandem program
- SPbU Ambassadors

Buddy program



Frederica . Italy



Natsumi. Japan

***Buddy** is a friend who will help you to check into dormitory/rent a room, prepare the documents as well as get acquainted with its culture and just enjoy your stay in St. Petersburg*

Events

- Karaoke night
- “Dacha*” party
- International dinner
- Board games evening
- Cooking workshop

*Dacha – Russian country cottage



Events

- Ruskeala tour
- Picnic
- Baltika brewery
- Excursions and trips to St. Petersburg's suburbs and Russian cities



AND MUCH MORE!



Social program



Charity Sale



Cat shelter



Art therapy



Language program

Speaking clubs

Informal meetings with or without native speakers for practicing language



Tandem program

Twosome meetings with native speakers of studied language and teaching them Russian



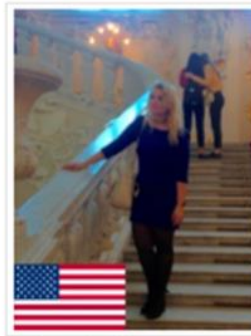
SPbU Ambassadors

Site: spbuambassador.wordpress.com

Our Ambassadors



Oliver Roy; Canada, University of Montreal; International Relations



Alexandra Chugunova; USA, Michigan State University; International Relations



Chen Yuexiao; China, Shanghai Jiaotong University; Management



Pia Schupp; Germany, Otto-von-Guericke University Magdeburg; International Relations

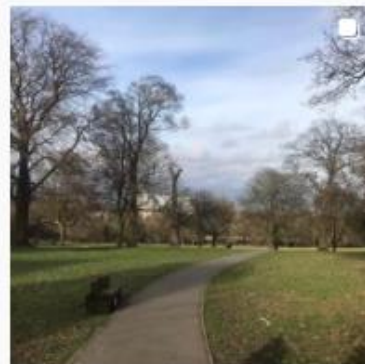
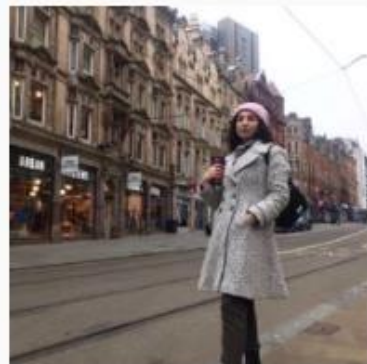
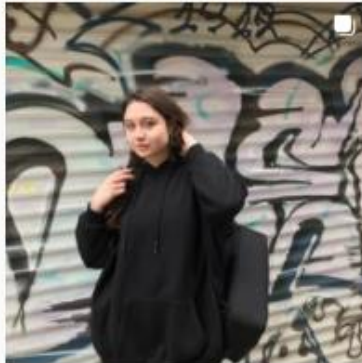
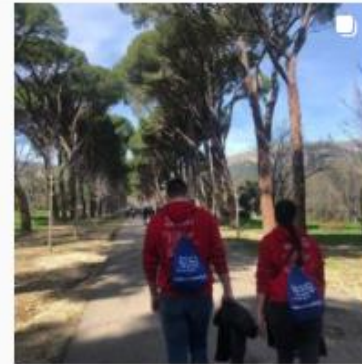
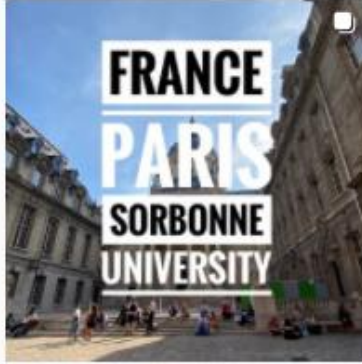


Pierre Nouseir; Australia, Macquarie University; International Relations



Alexander Gertz; Germany, University of Erfurt; International Relations

SPbU Ambassadors



SPbU Ambassadors



spbu_ambassadors

https://www.instagram.com/spbu_ambassadors/



@spbu_ambassadors

<https://vk.com/mobilityspbu>

Statistics

238 Average number of **exchange students** per semester

32 Average number of **events** per semester

9 Average number of **language clubs** per semester

31 Average number of **countries** exchange students come from

Feedbacks



As it was winter, we went for a dive in a frozen lake after the religious ceremony. To warm up, we had Borsh and Vodka afterwards. I guess it can't get more Russian than this!



Daan, Netherlands



And what really made the difference was Katerina, my buddy!!! She was always present in all difficult situations, even when I had to decide which pair of boots was better to buy for Russian winter!

Federica, Italy

Social media



@esn_spbsu

https://www.instagram.com/esn_spbsu/



@esn_spbsu

<https://www.facebook.com/esnspbsu/>



esn_spbsu

https://vk.com/esn_spbsu



Erasmus Student Network

spbsu@esnruussia.org

www.esn.org



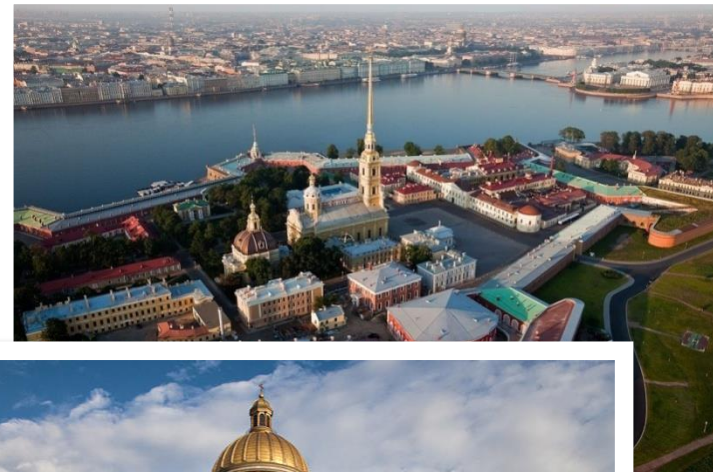


St Petersburg
University

Survival Guide to St. Petersburg

Top 5 sights in St. Petersburg

- Hermitage – **free** (12:00-17:00)
- Peter and Paul Fortress – **150** rub for the specific exhibition and **400** rub for the complex ticket
- Summer Garden - **free**
- Russian Museum – **free**
- St. Isaac Cathedral – **100** rub



*1 euro=90 rubles

St. Petersburg's hallmarks



Courtyards - free

Drawbridges - free



*1 euro=90 rubles

John Lennon str.



Mosaic yard



Yard of art

Theatres

- Mariinsky
- Alexandrinsky
- Mikhailovsky
- Tovstonogov Bolshoi Drama
- Comedy theatre
- Lensoviet

Price for the ticket from 700 rub

[*1 euro=90 rubles](#)



Public transport

- Land transport 55 rub
- Metro 60 rub
- Student transport card 1 160 rub/month for all means of transport



*1 euro=90 rubles

Security in the metro



Taxi

- Yandex
- Uber Russia
- Gett
- Bolt



Taxi ride from 300* rub

*from the dormitory to the city centre

**1 euro=90 rubles

Films in english & original language



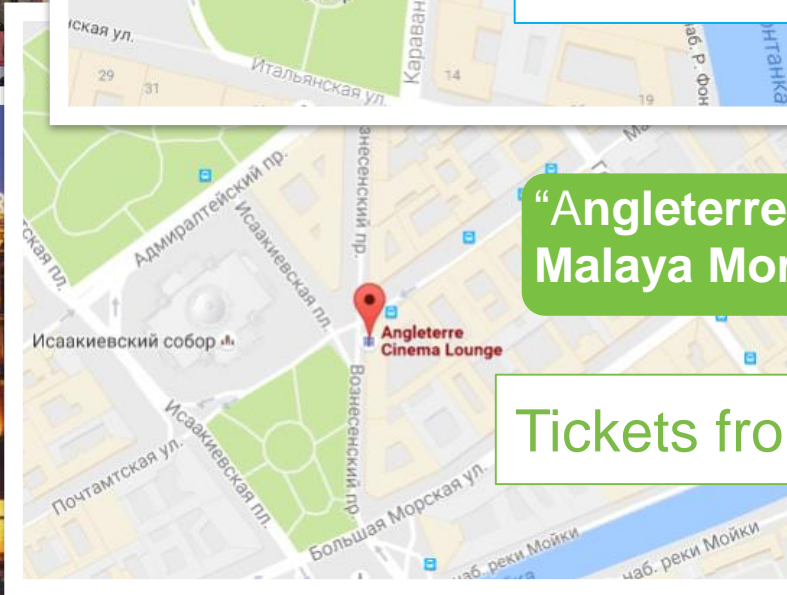
“Rodina”
Karavannaya st.,12

Tickets from 150 rub



“Angletterre cinema lounge”
Malaya Morskaya st., 24

Tickets from 250 rub



*1 euro=90 rubles

Russian cuisine



Buckwheat



Syrniki



Shchi



Pancakes



Kvas

Russian restaurants

- Teremok 350 rub
- Sadko 1 600 rub
- Mari Vanna 1 400 rub
- Russian Ampir 3 500 rub
- Tsar 3 000 rub
- Katyusha 1500 rub

*The average check without beverages

**1 euro=90 rubles



International cuisine

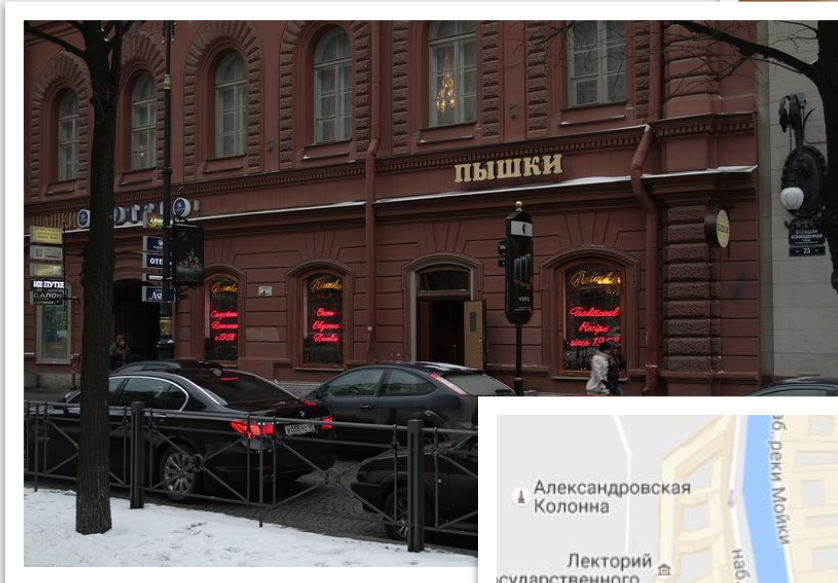
- Tokyo City (Japanese) 750 rub
- Koreana (Korean) 600 rub
- Marchellis (Italian) 1 200 rub
- Café (coffee + dessert) 450 rub
- Mcdonalds, KFC, Burger King
(Fast food) 300 rub

*The average check without beverages

**1 euro=90 rubles

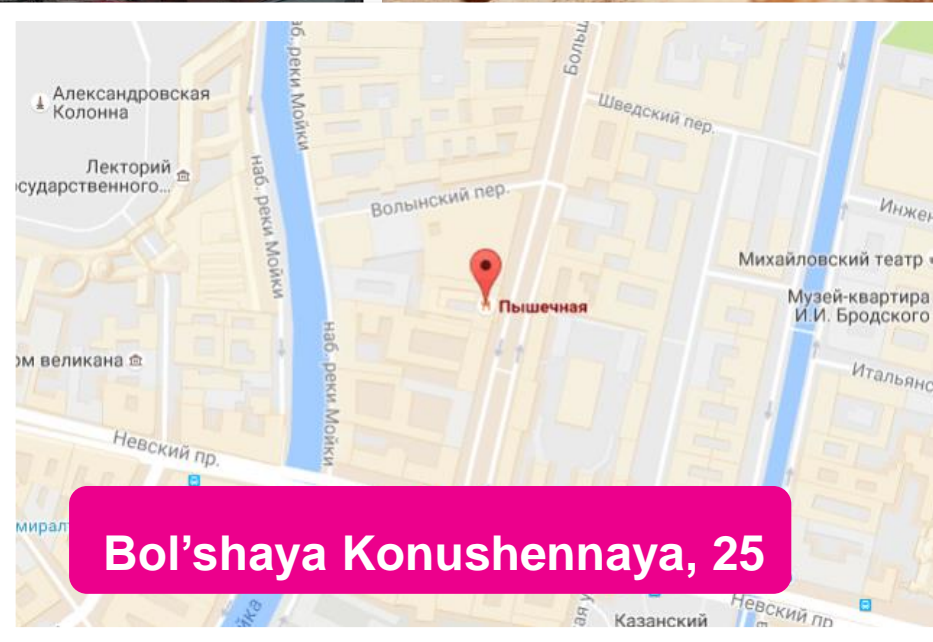


Pyshki – Russian donuts



Pyshka – 14 rub

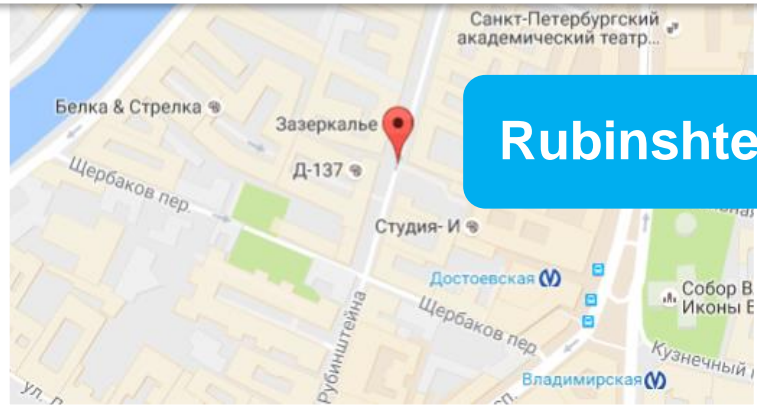
Tea – 20 rub



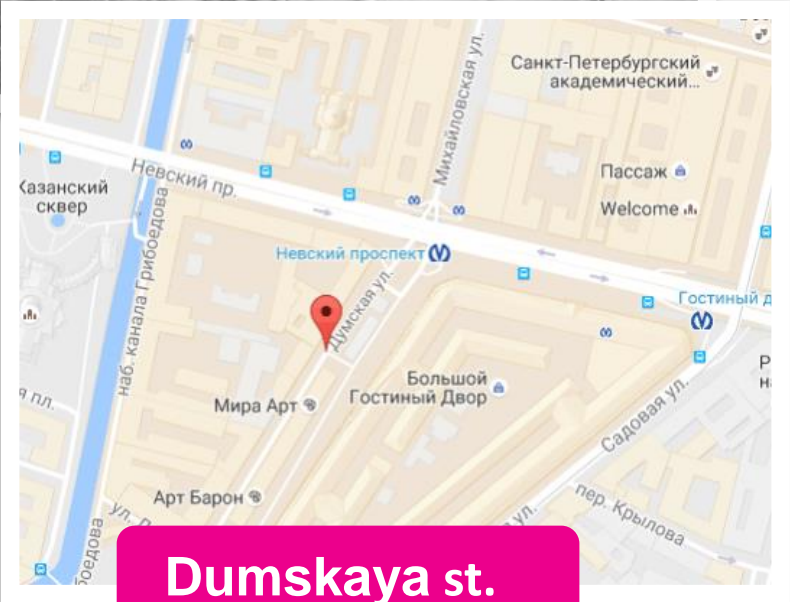
*1 euro=90 rubles

Bars

Cocktails from 200 rub



Rubinshteina st.



Dumskaya st.

*1 euro=90 rubles

Trips

- Peterhof
- Pushkin
- Kronstadt
- Lake Ladoga
- Karelia
- Gatchina
- Pavlovsk

One-way ticket for the train from **75** rub

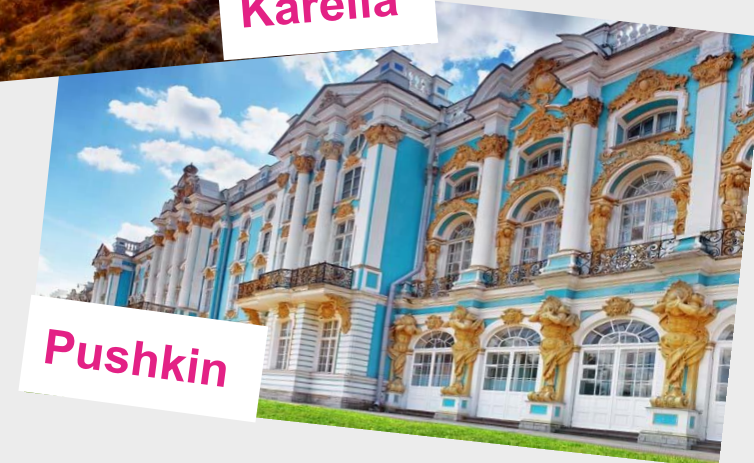
[*1 euro=90 rubles](#)



Peterhof



Karelia



Pushkin

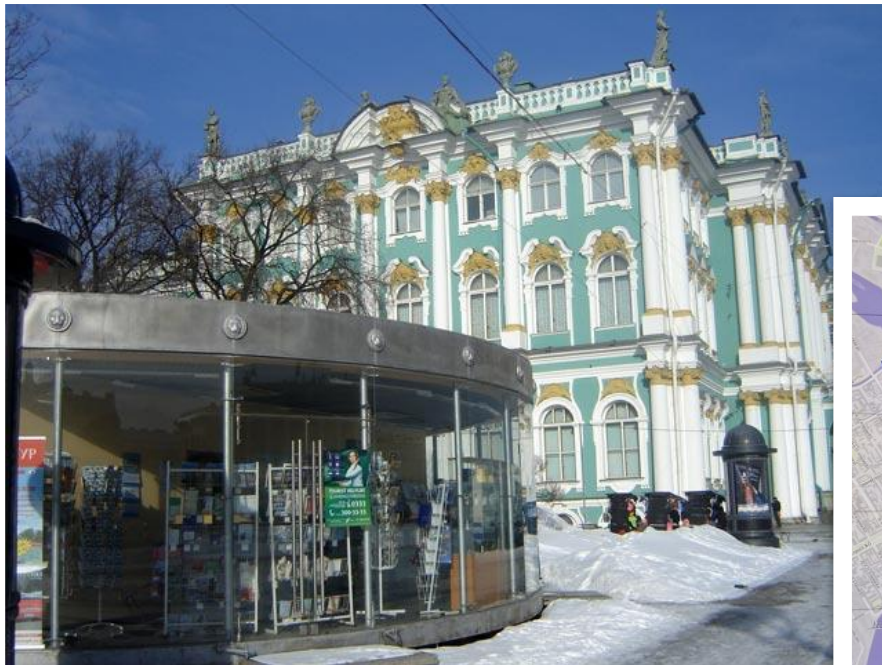
Weather

Don't forget **your umbrella!**



Info points

There are a lot of tourist help points in the city where you can take free maps and guidebook



Useful links

- kudago.com
- afisha.ru
- visit-petersburg.ru (in English)
- spb.kassir





Thanks for your attention &
enjoy your stay in
St. Petersburg!!!



St Petersburg
University



Q&A

Thank you for being here with us!

<https://english.spbu.ru/download-brochures/virtur>